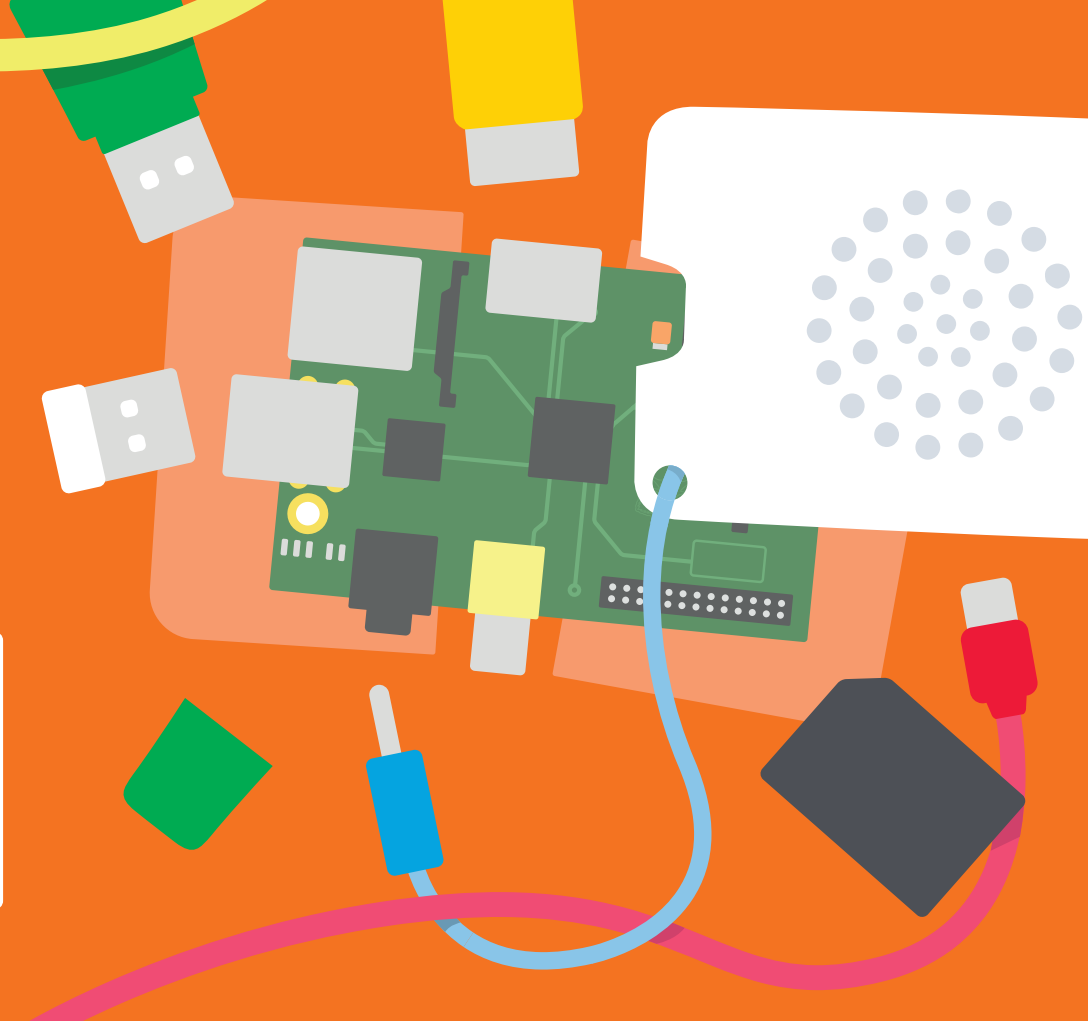
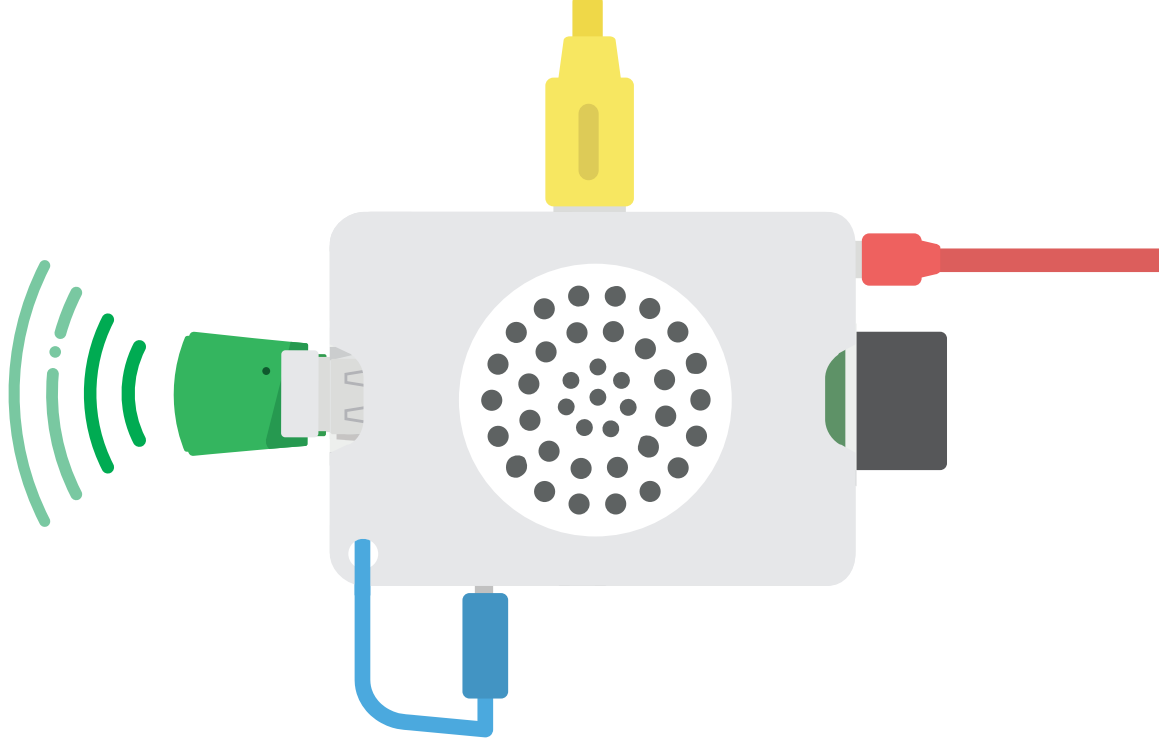




BOOK 1

make a computer



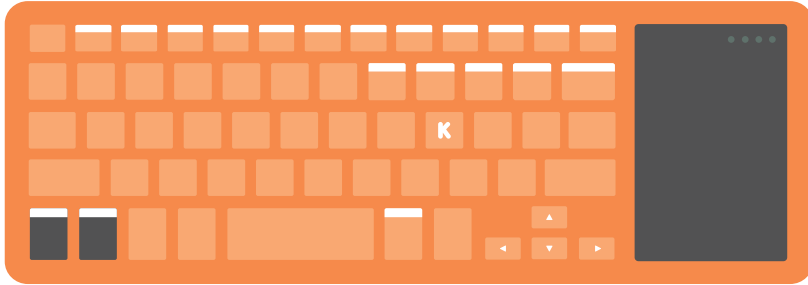


_____'s Kano
Your name here

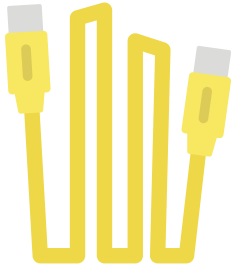


Hey! I'm Judoka, your Kano companion. Ready to go?
Take out the pieces!

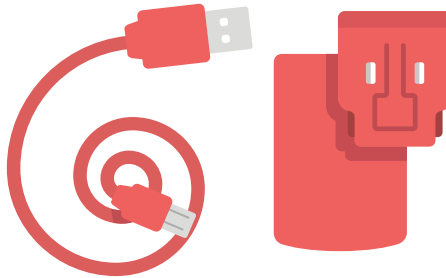
Keyboard wireless/bluetooth



HDMI cable



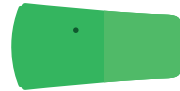
Power plug and cable



Kano OS SD Card



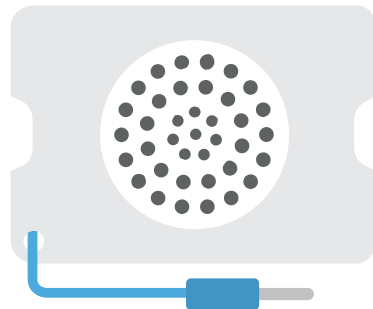
Wifi USB Dongle



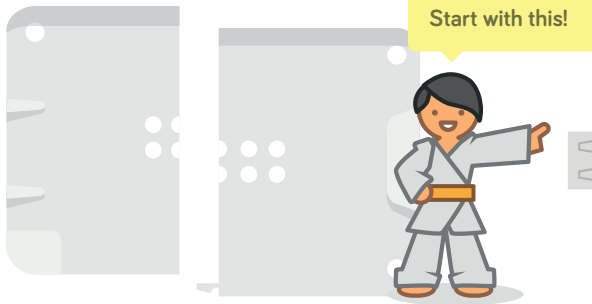
Case cards orange and transparent



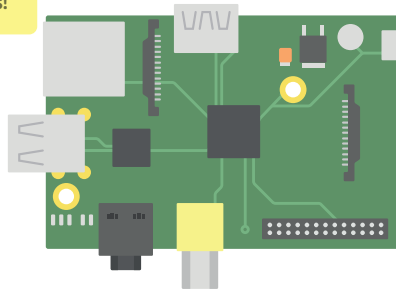
DIY Speaker



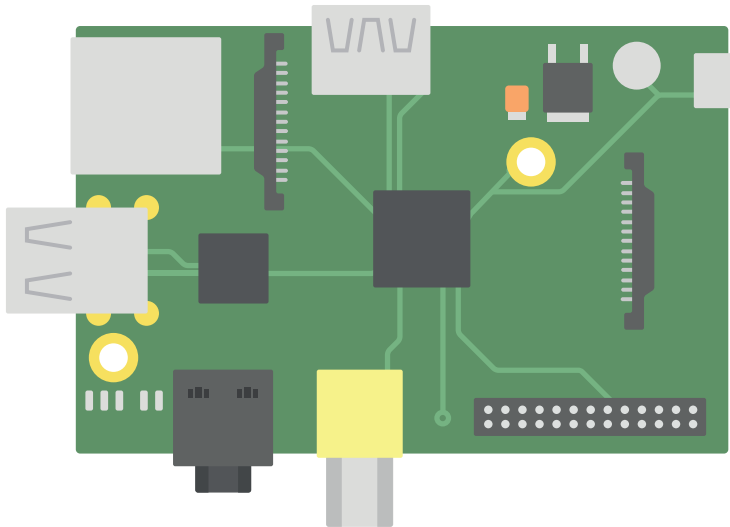
Custom Case



Raspberry Pi Model B

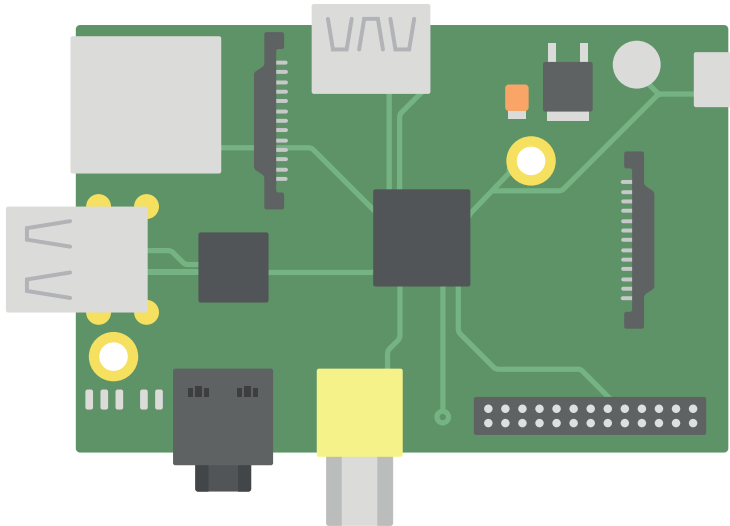


This is your computer's brain



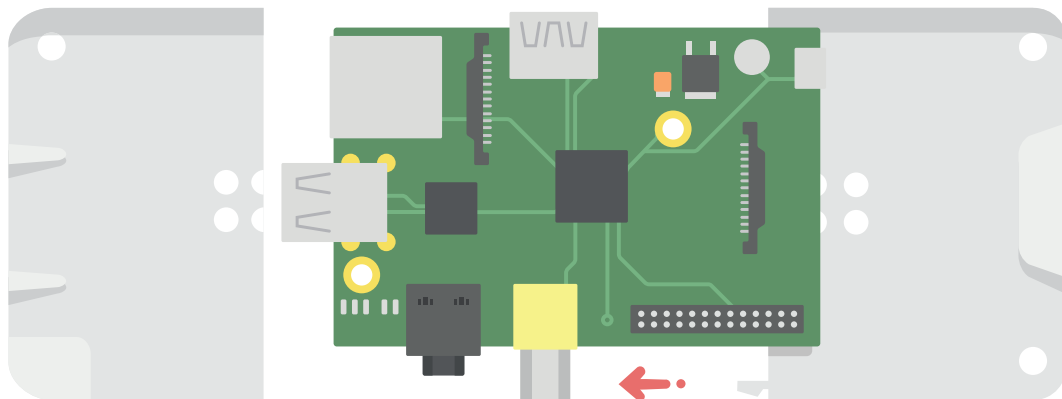
It's tiny, but powerful

To keep it strong and safe,



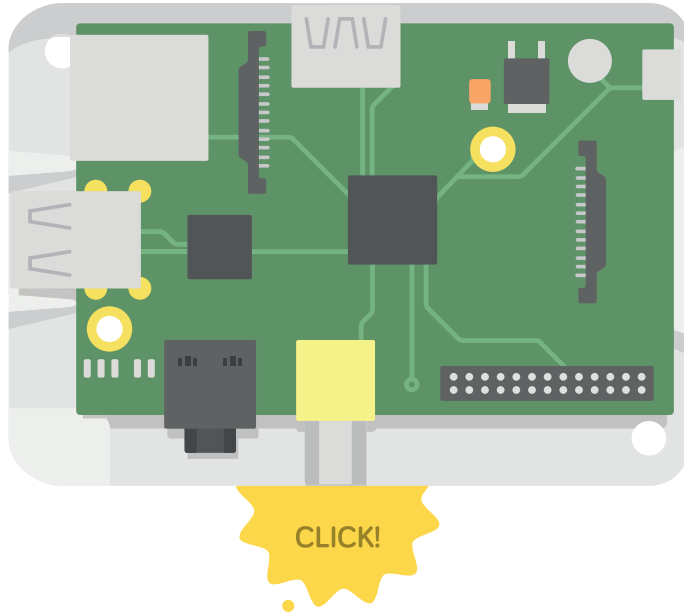
let's make a case

Grab the sides...

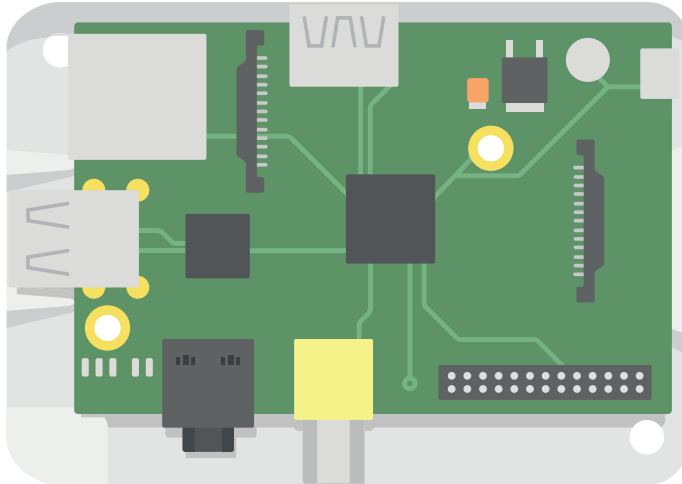


...and line them up

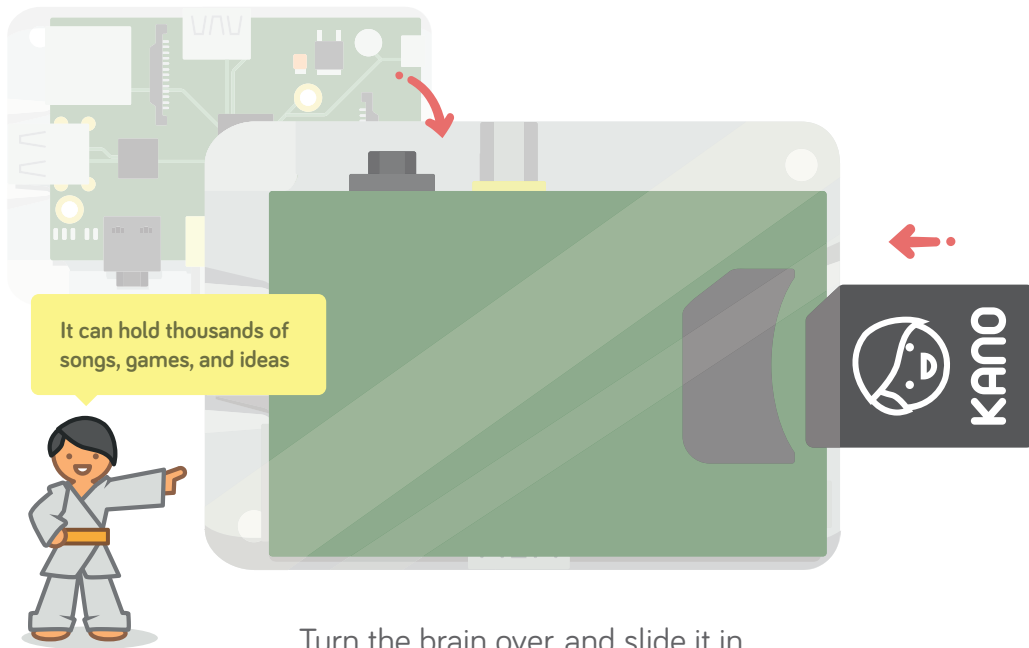
Slide them together



Now let's give the brain new powers



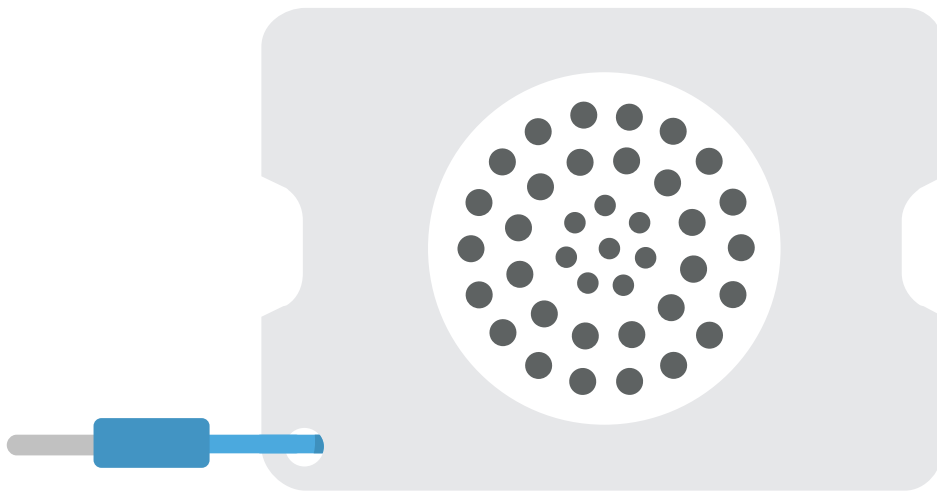
Grab the memory card



A stylized illustration of a Raspberry Pi 4B computer board. The board is green with various components: a central black square chip, a yellow USB-C port at the bottom, a black Ethernet port, a black USB-A port, a black micro-USB port, a black camera module, a black display module, a black fan, and a black power button. The board is shown from a top-down perspective, with a white background and a grey border.

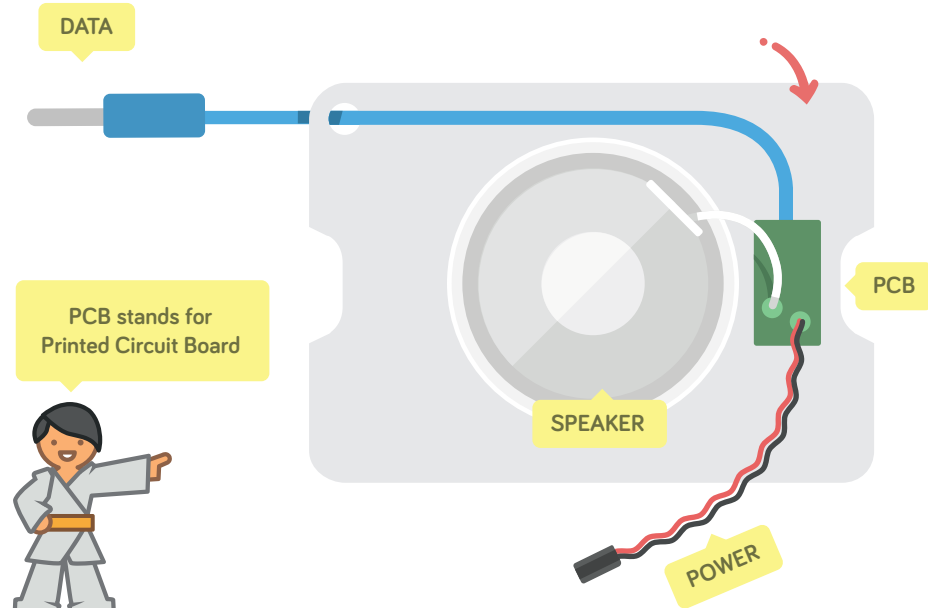
[illegible]

Let's give it a voice



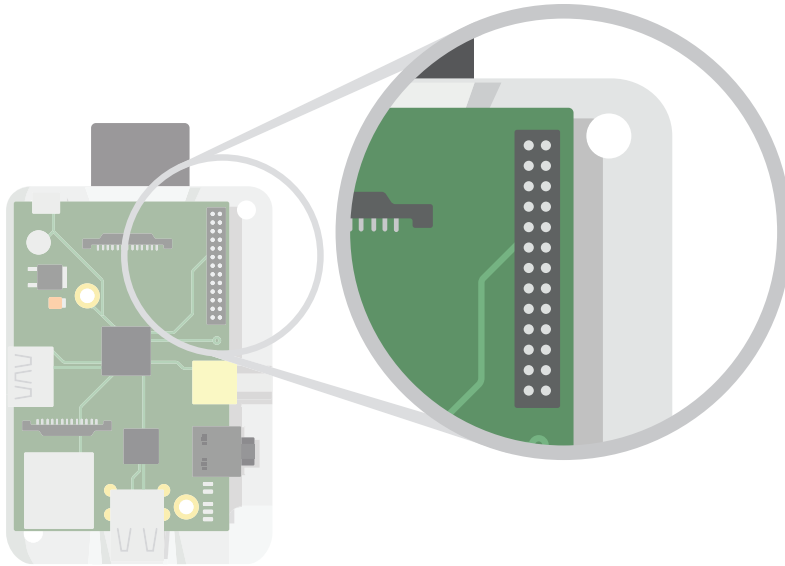
Pick up the speaker

Flip it over



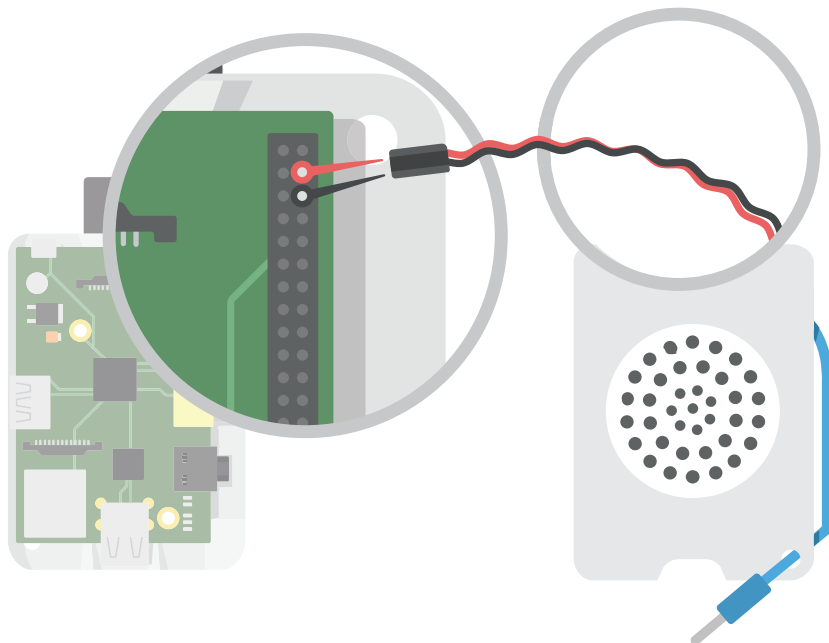
These parts work together to sing songs

Your computer can turn electricity into sound!



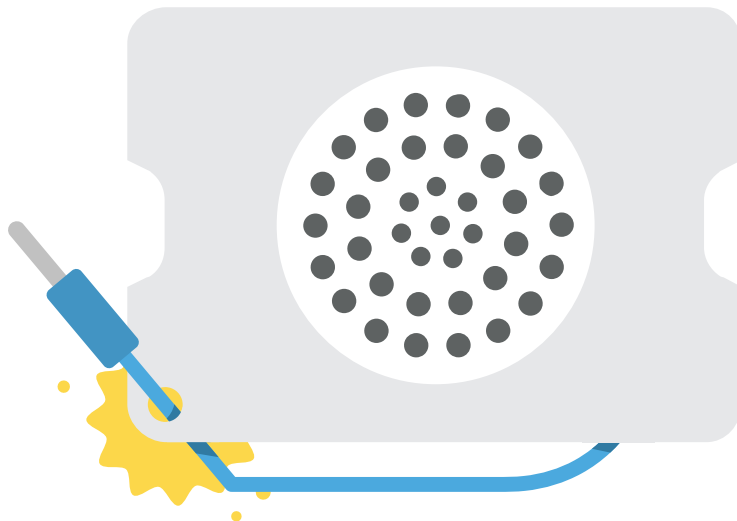
Let's borrow electrical power from these pins

Make sure you connect it like this

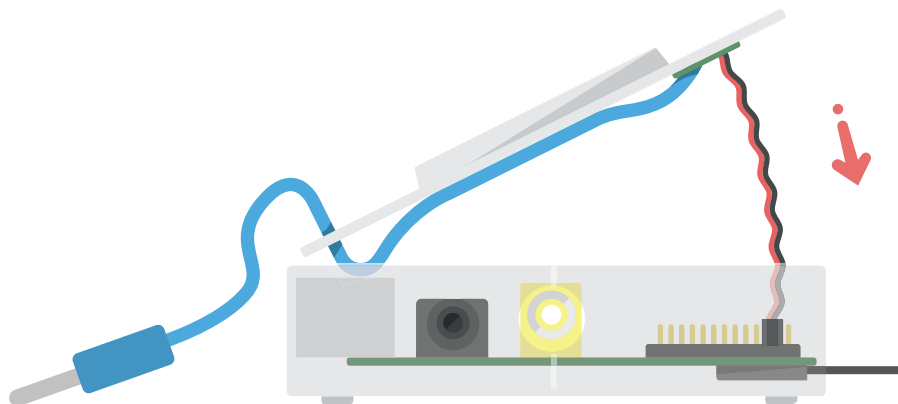


The pins have to be those exact two

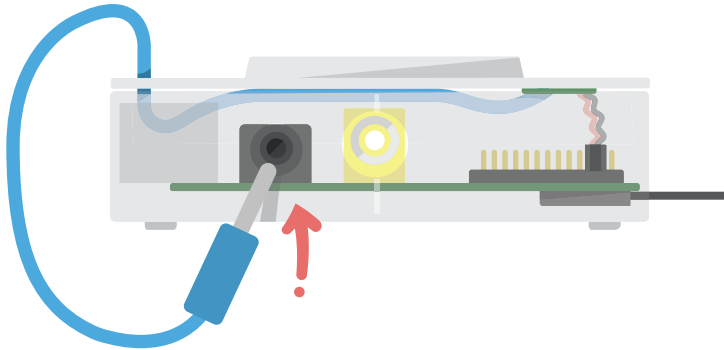
Put the blue cable through the hole



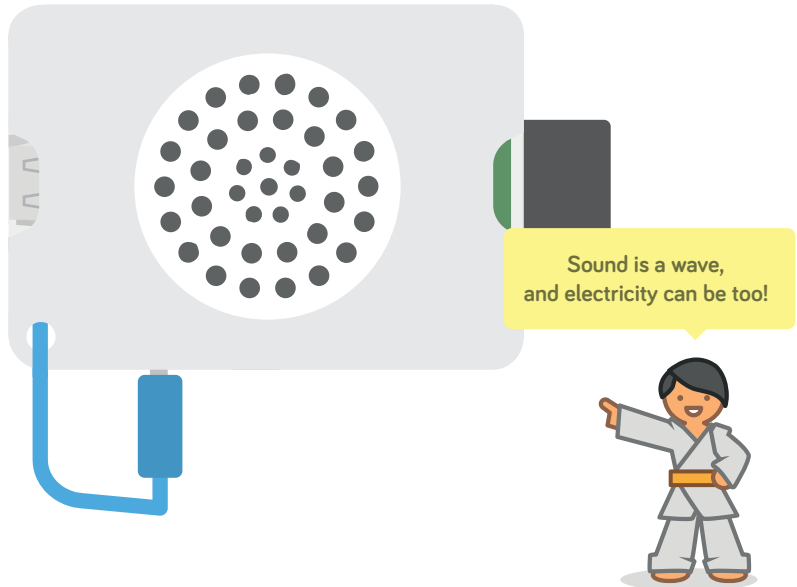
Now clip the speaker to the case



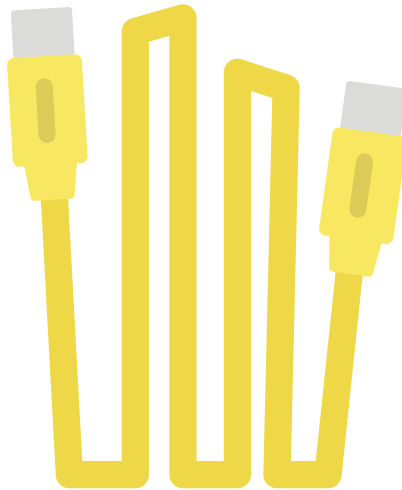
Plug in the blue cable



Amazing! A cool computer that can rock out



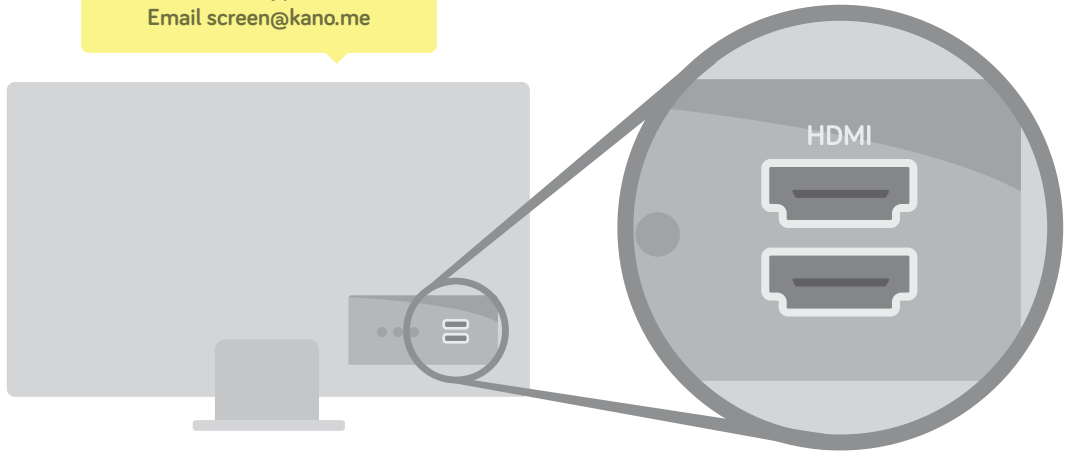
Let's connect a screen



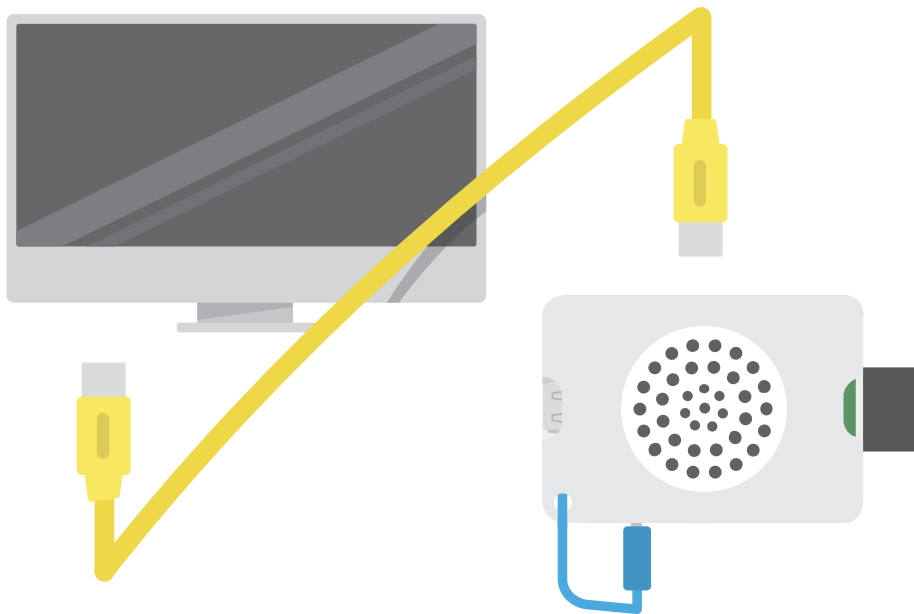
Grab the yellow HDMI cable

Find a display or TV with this kind of plug

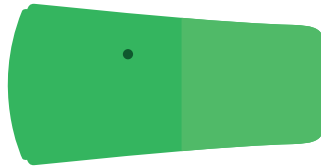
Have a different type of screen?
Email screen@kano.me



Connect them



Now lets add WiFi

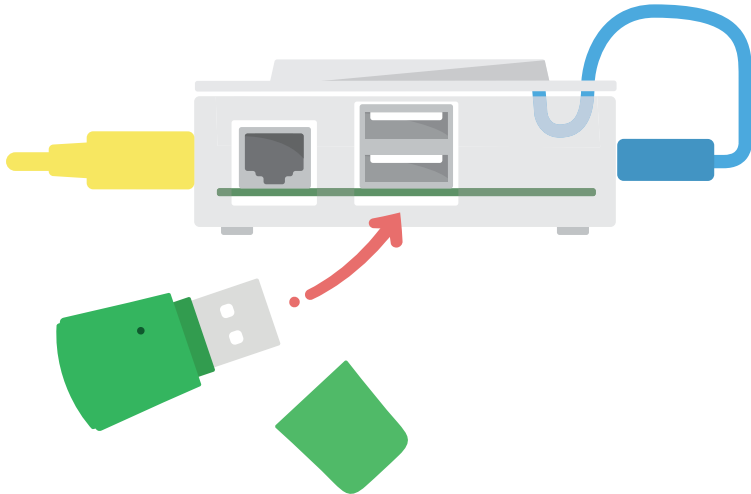


A WiFi antenna
in a USB!

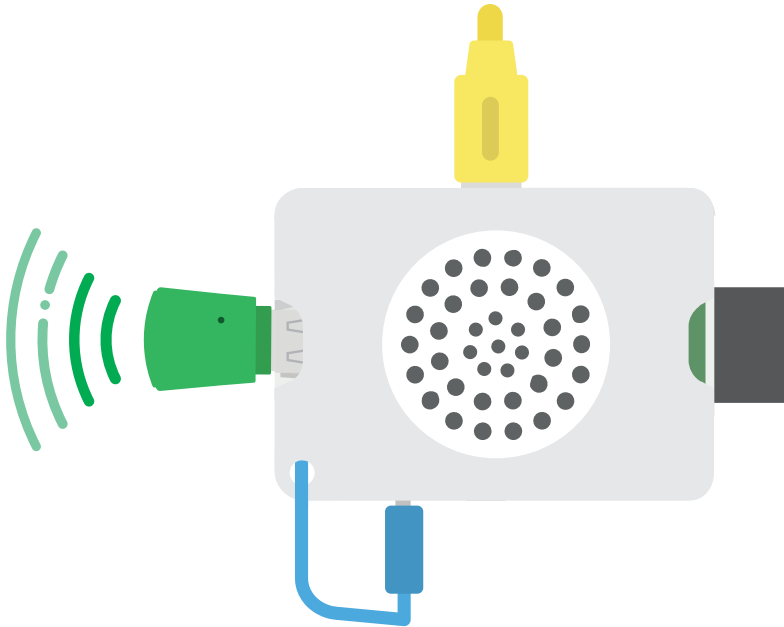


Grab the green dongle

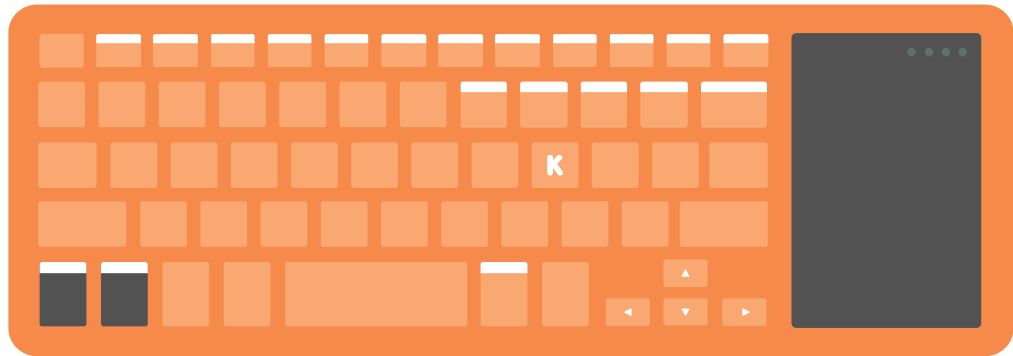
Plug the dongle into the USB



With this little piece, you can connect with the world!

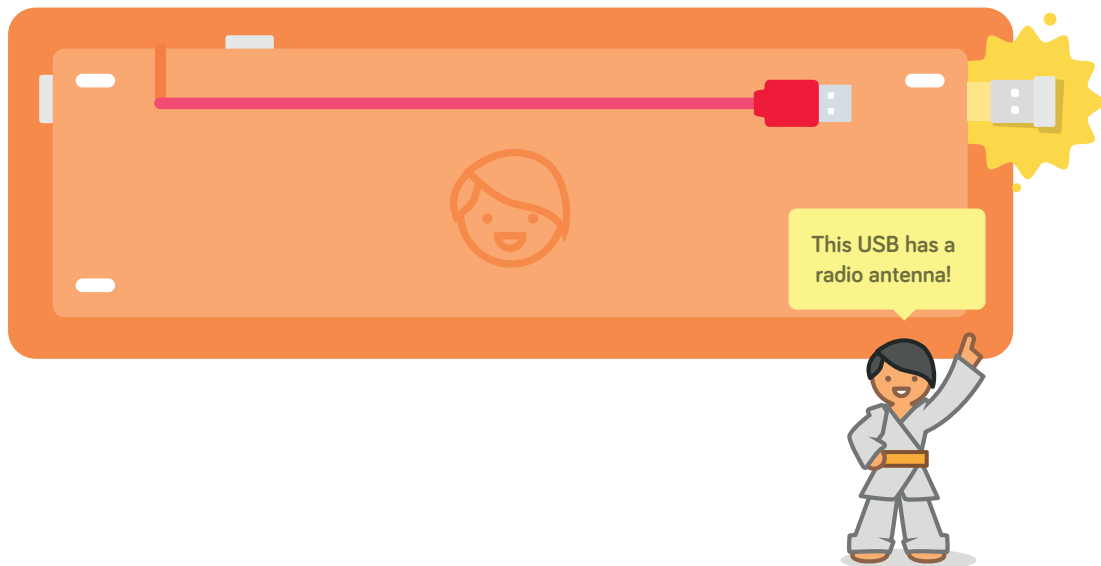


Now your computer can talk, display, and connect

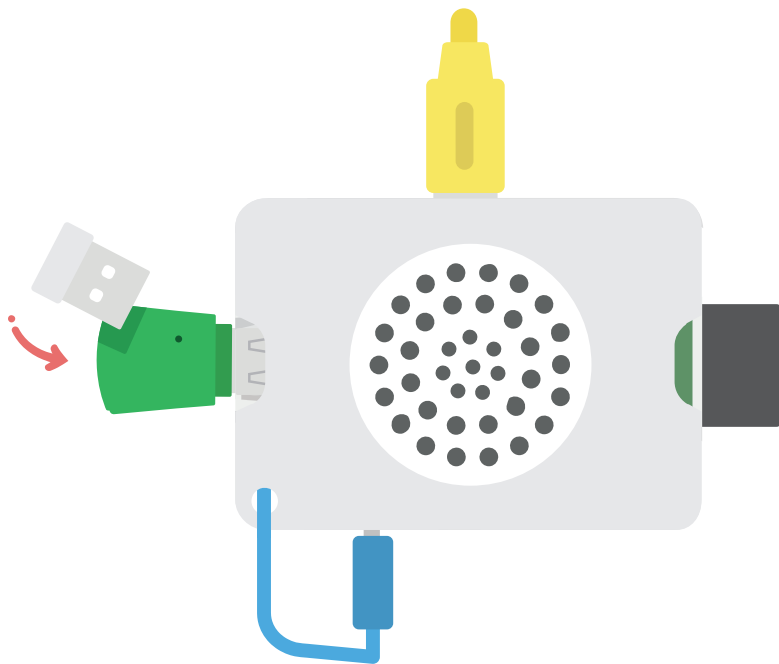


Let's give it some new ideas. Grab your keyboard!

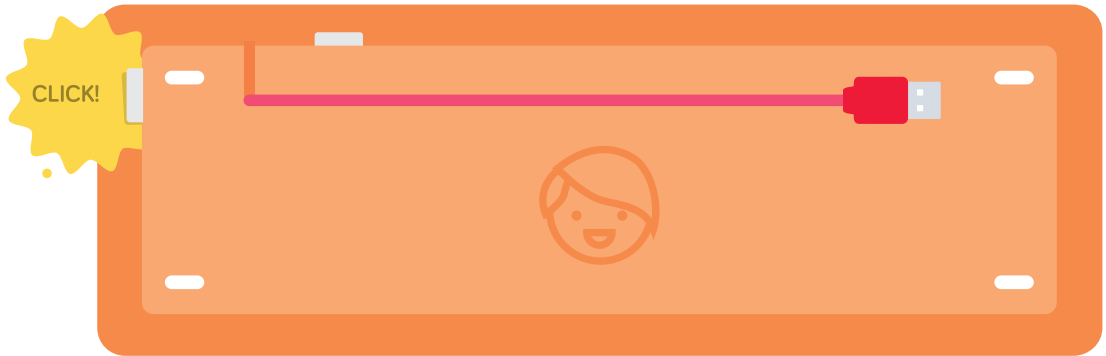
Pick it up, flip it around, and take out the white piece



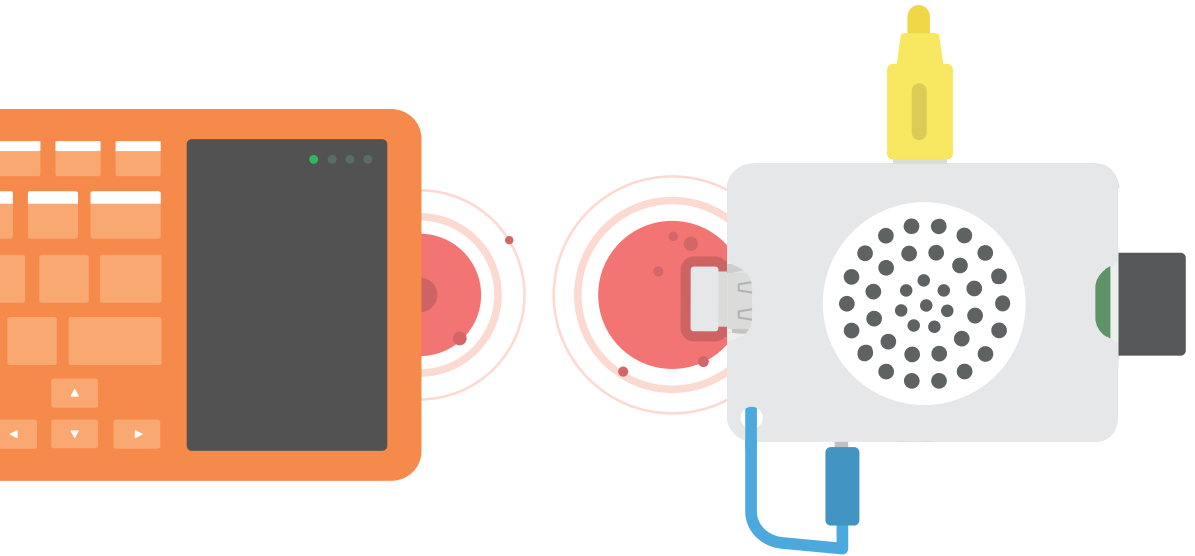
Plug the piece into your computer



Press the power button

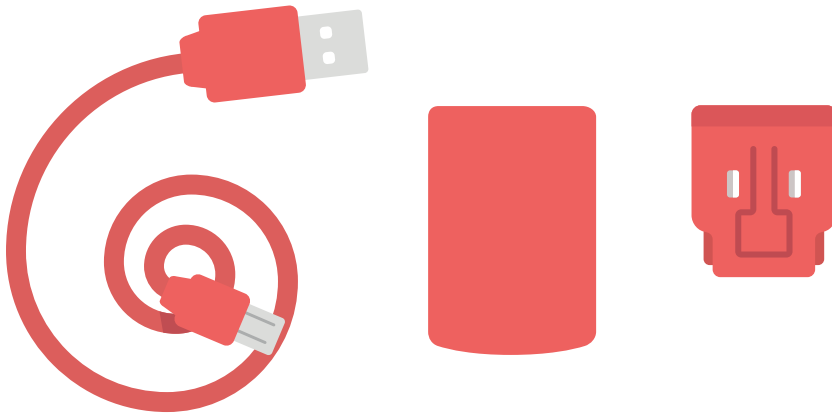


You can talk to your computer, and the computer can talk to you!



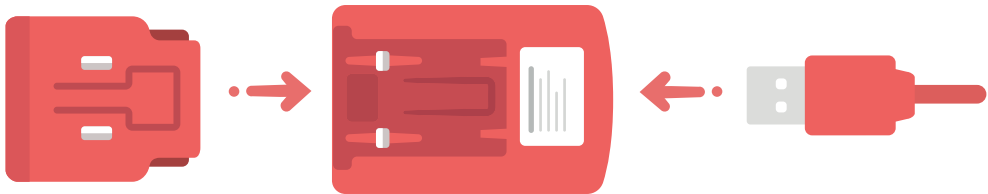
But first...

We need to bring it to life!



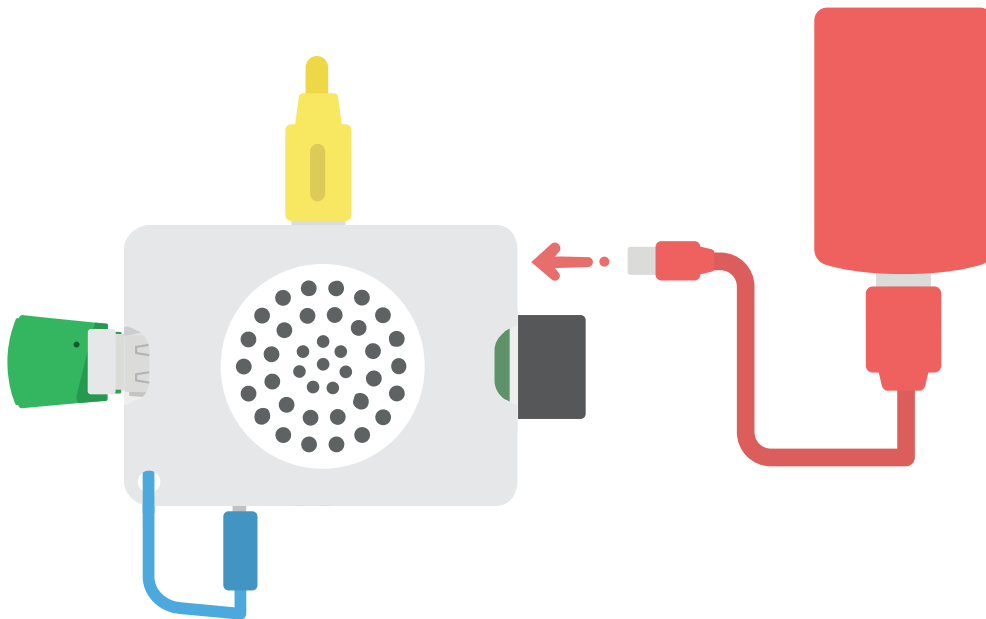
Grab the power pieces

Start by sliding the plug pieces together

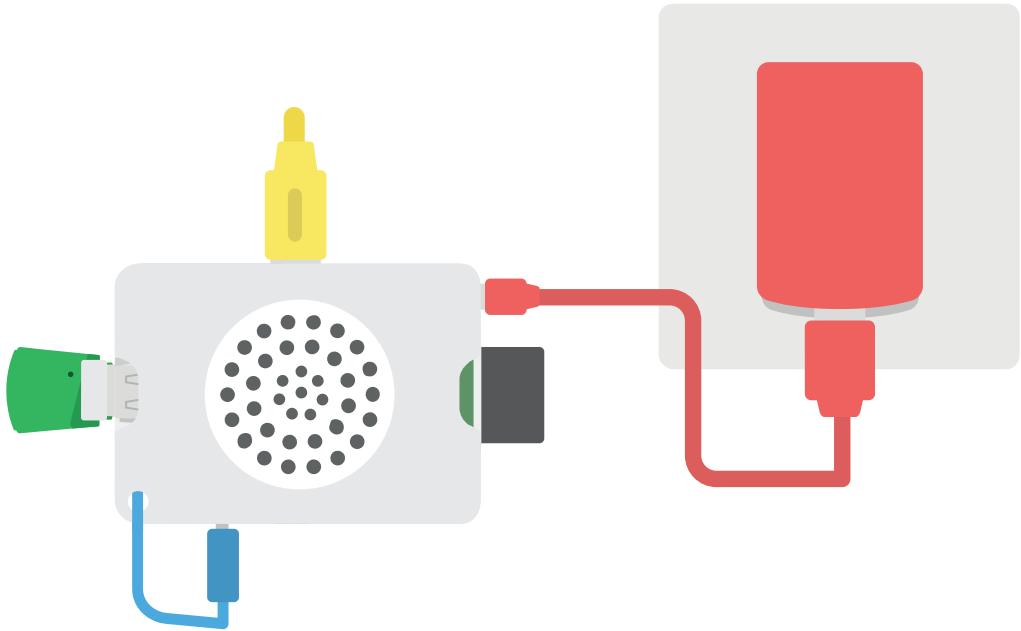


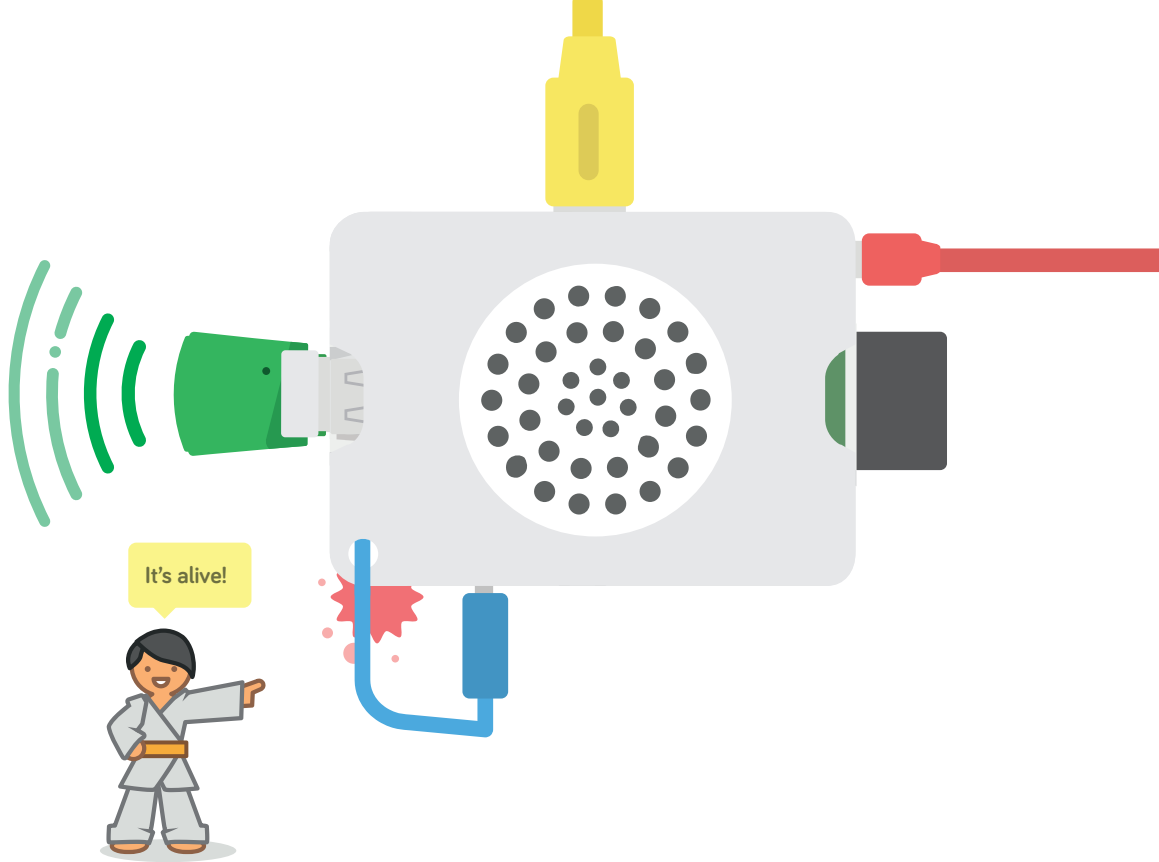
Then connect the big end of the red cable to the bottom

Now grab the small end and connect it to your computer



Put the power plug into a wall socket





And look at your screen!

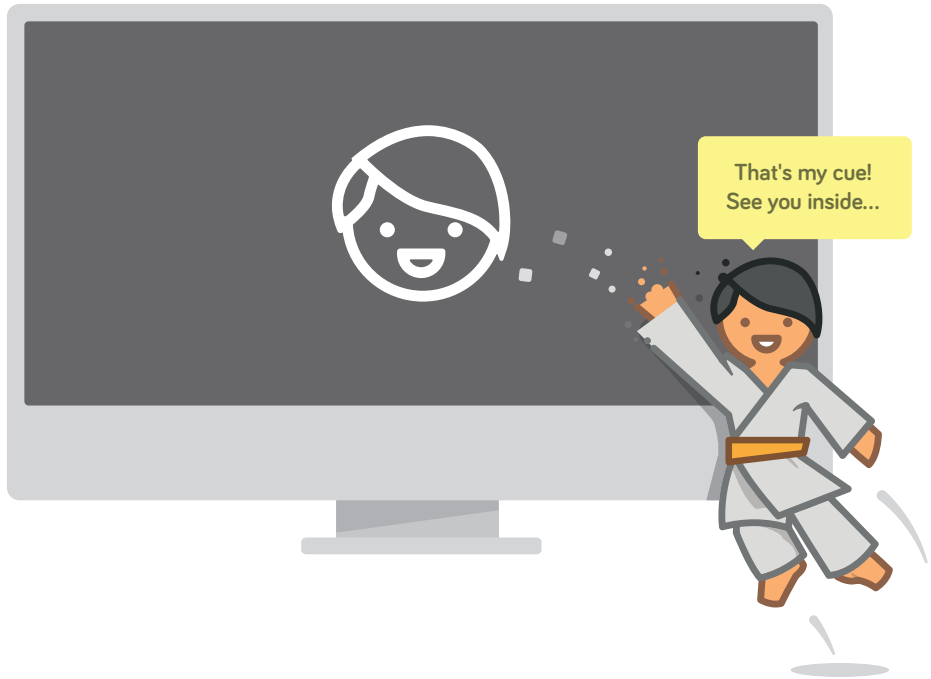


Your computer is thinking



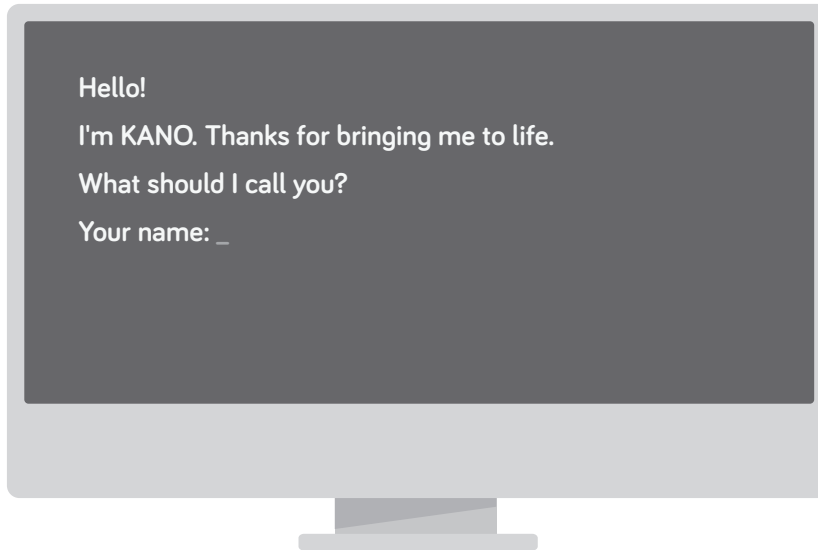
With code...

Computers can make anything...



That's my cue!
See you inside...

Now follow along onscreen...



Type and press [ENTER]

You made it!



Now let's get set up...

Kano is your world to make and play



In here you'll create the most amazing things



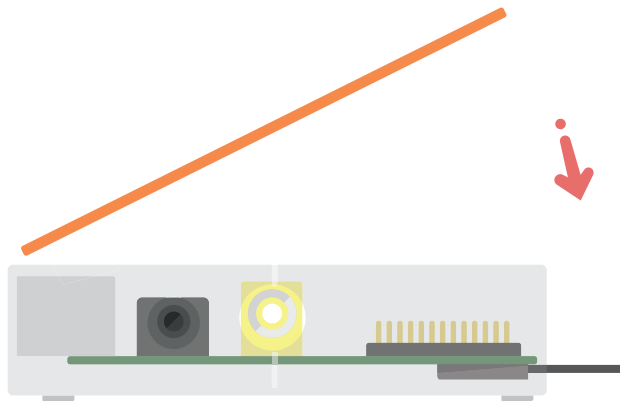
Pick up Book 2 to get started

Oh, by the way – you can customize your computer

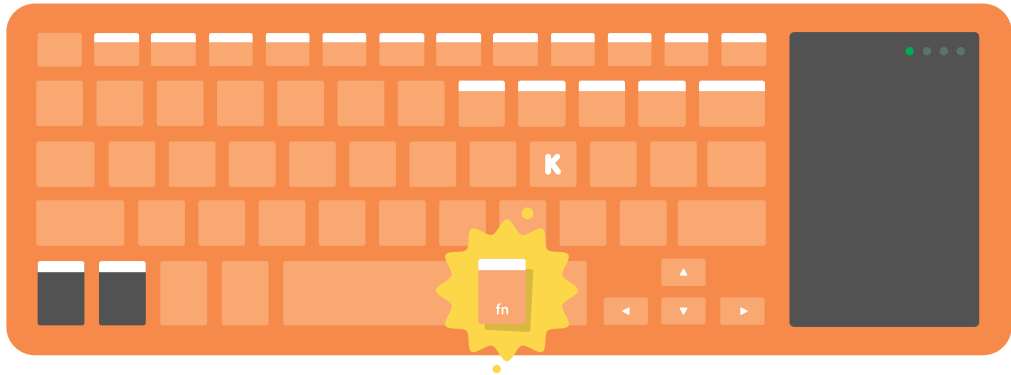


Choose your favorite case card...

And clip it in



Your keyboard has hidden powers

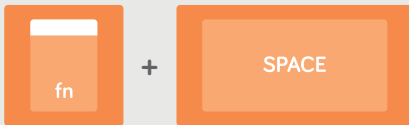


Activate the white functions by holding [FN]

Try these combinations



Launch Kano Help
If you run into problems

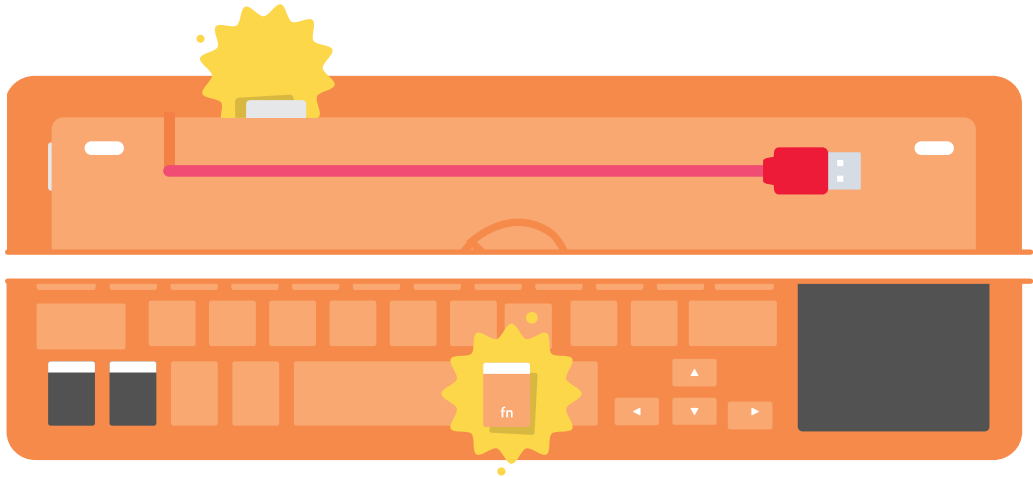


Change mouse speed
Medium or fast



Toggle tap-to-click
Activate tapping on the trackpad

Your keyboard can connect to anything that has Bluetooth!



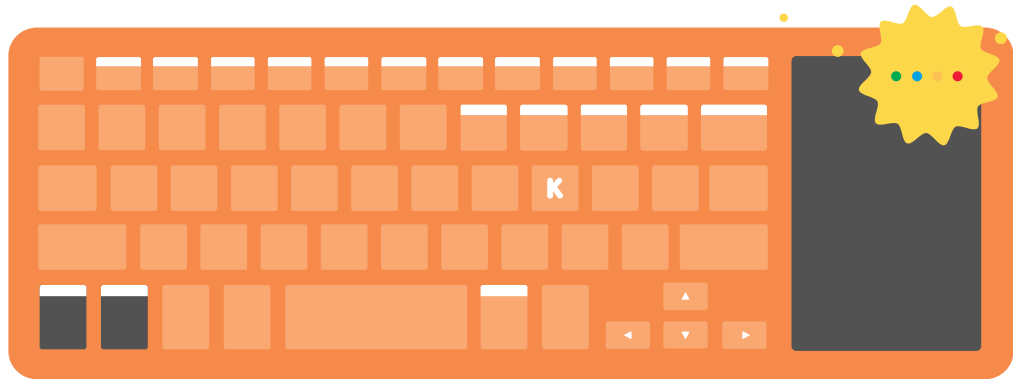
Press FN and Bluetooth button to enter pair mode

Go into your devices settings and add the Kano Keyboard

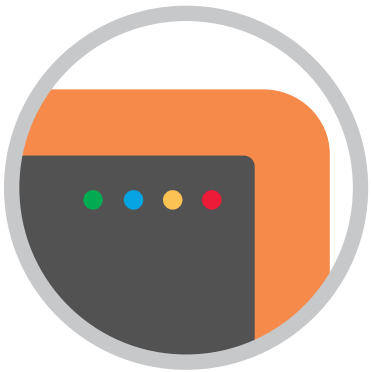


Done!

The lights on the keyboard tell you how it's feeling



Green, blue, orange and red mean different things



Green - Successful radio connection



Green flash - Low on power, time to charge!



Blue - Bluetooth connected

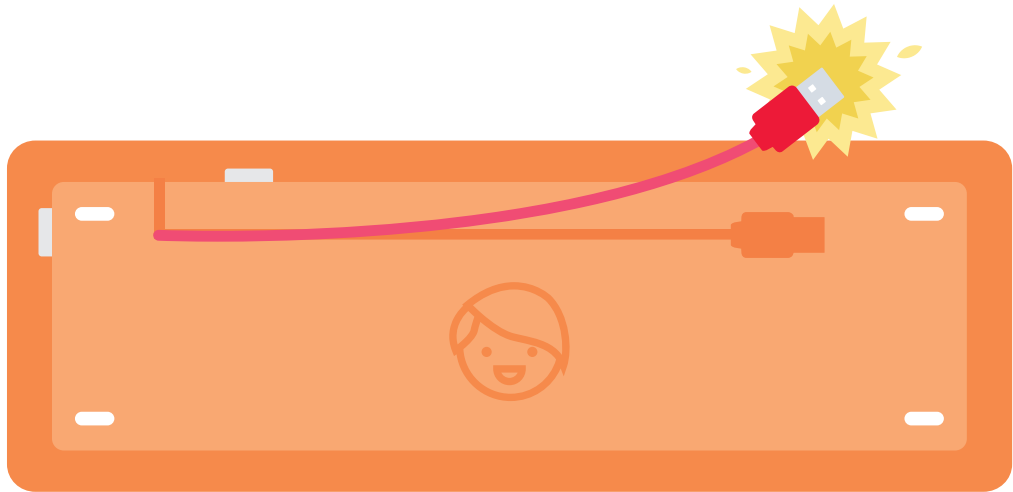


Orange - Caps lock status



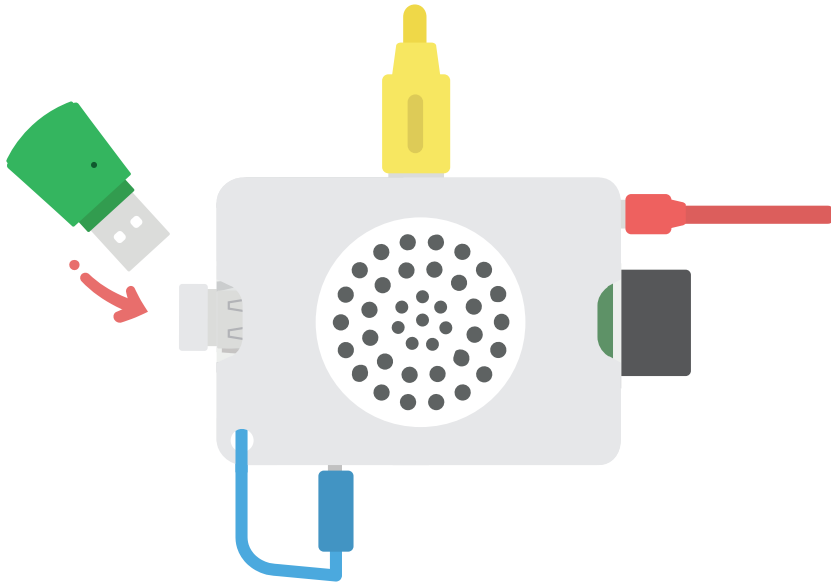
Red - Charging

The keyboard needs to be charged from time to time



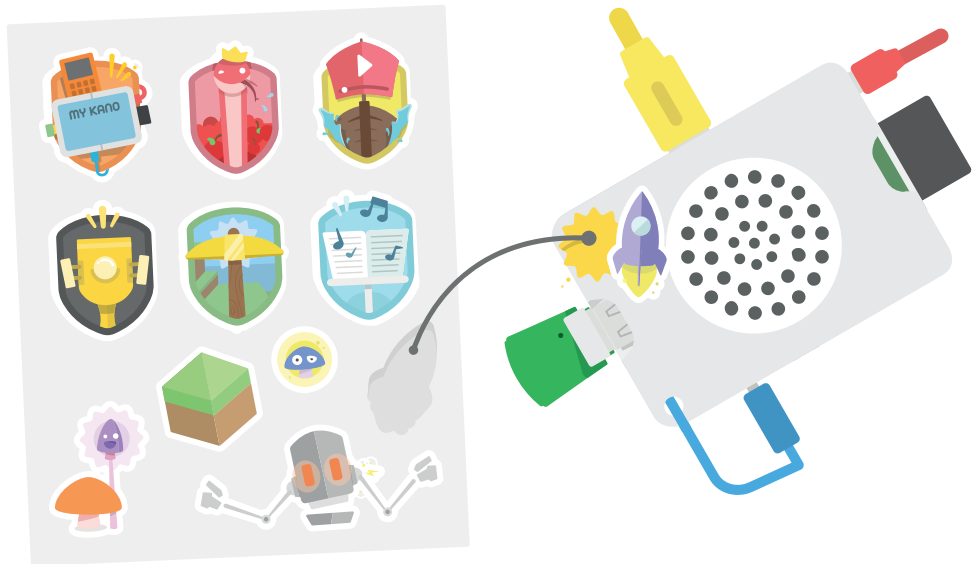
To do so, plug the red cable into the power plug, or to your computer

Just so you know, when you plug in a USB...



Your computer will restart

And remember to add stickers!



Make your own style...

Need help? Want more?

E-mail

help@kano.me

Website

Kano.me

Facebook

[KanoComputing](#)

World

world.kano.me

Twitter

[@TeamKano](#)

Forum

talk.kano.me

Say hi!

EXTRAS

52

